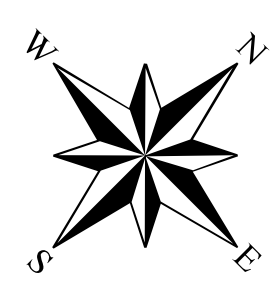


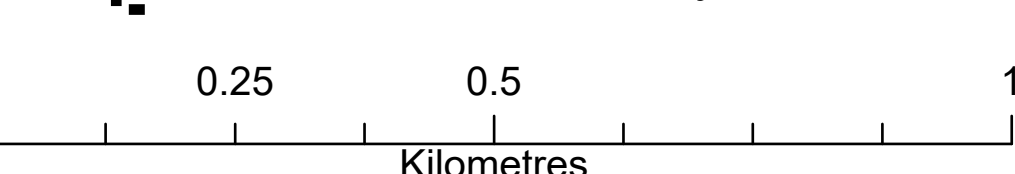
Highway 6 (Hanlon Expressway) Study Area

G.W.P. 14-00-00
July 17, 2017

- EA Approved Preliminary Design:
Existing Roads
- EA Approved Preliminary Design:
New Roads
- EA Approved Road Closure
- GWP14-00-00 Study Area Boundary



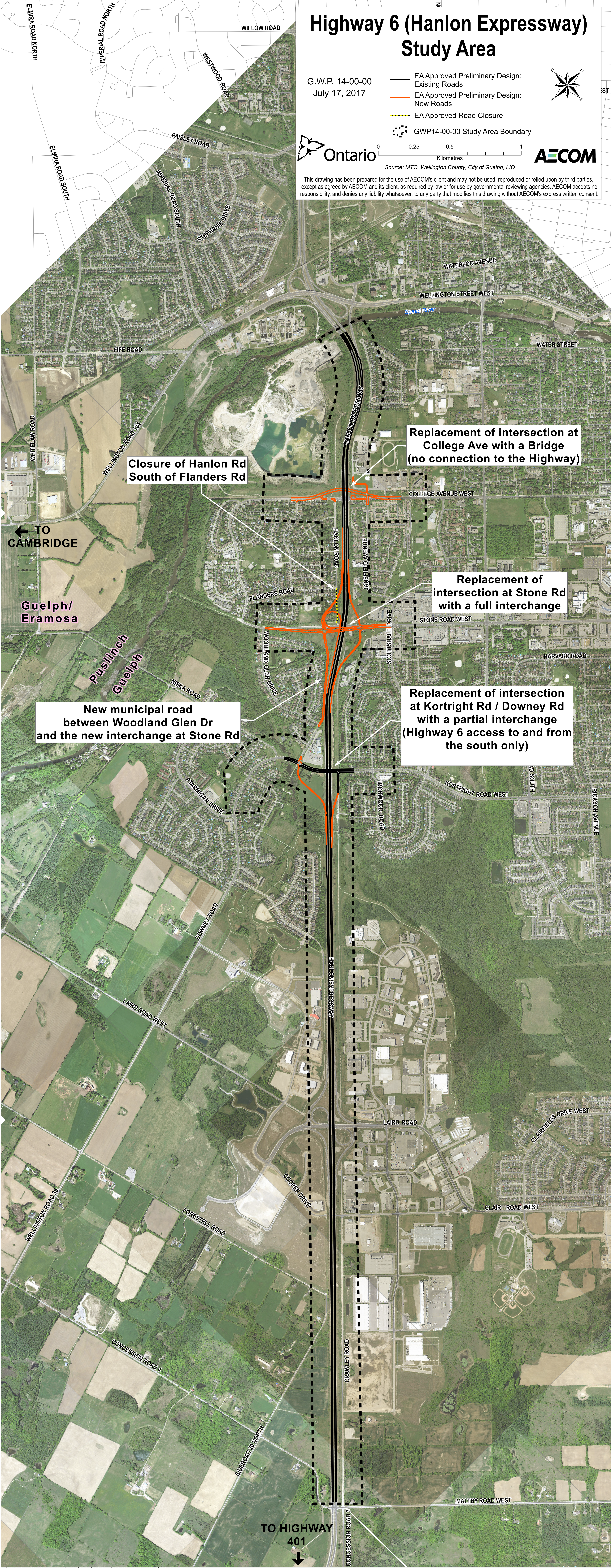
Ontario



Source: MTO, Wellington County, City of Guelph, LIO

AECOM

This drawing has been prepared for the use of AECOM's client and may not be used, reproduced or relied upon by third parties, except as agreed by AECOM and its client, as required by law or for use by governmental reviewing agencies. AECOM accepts no responsibility, and denies any liability whatsoever, to any party that modifies this drawing without AECOM's express written consent.



Closure of Hanlon Rd
South of Flanders Rd

Replacement of intersection at
College Ave with a Bridge
(no connection to the Highway)

Replacement of
intersection at Stone Rd
with a full interchange

New municipal road
between Woodland Glen Dr
and the new interchange at Stone Rd

Replacement of intersection
at Kortright Rd / Downey Rd
with a partial interchange
(Highway 6 access to and from
the south only)